

ODM Quality Report

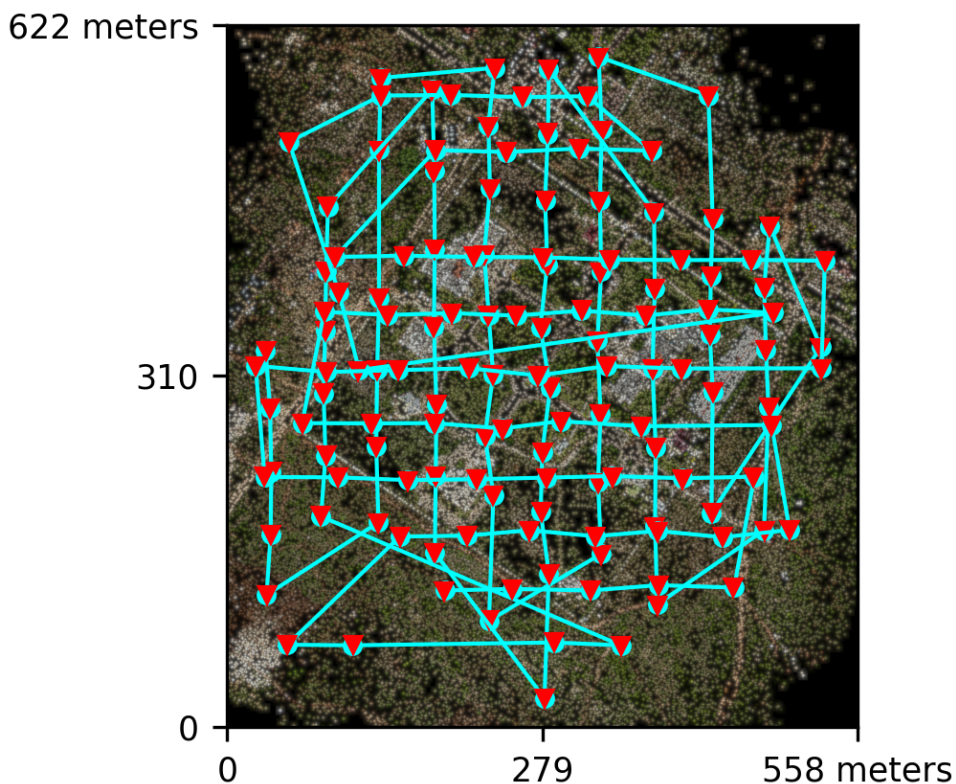
Processed with ODM version 3.5.0

Dataset Summary

Date	13/04/2024 at 18:29:13
Area Covered	0.286486 km ²
Processing Time	38.0m:21.0s
Capture Start	24/11/2016 at 11:21:01
Capture End	24/11/2016 at 12:03:35

Processing Summary

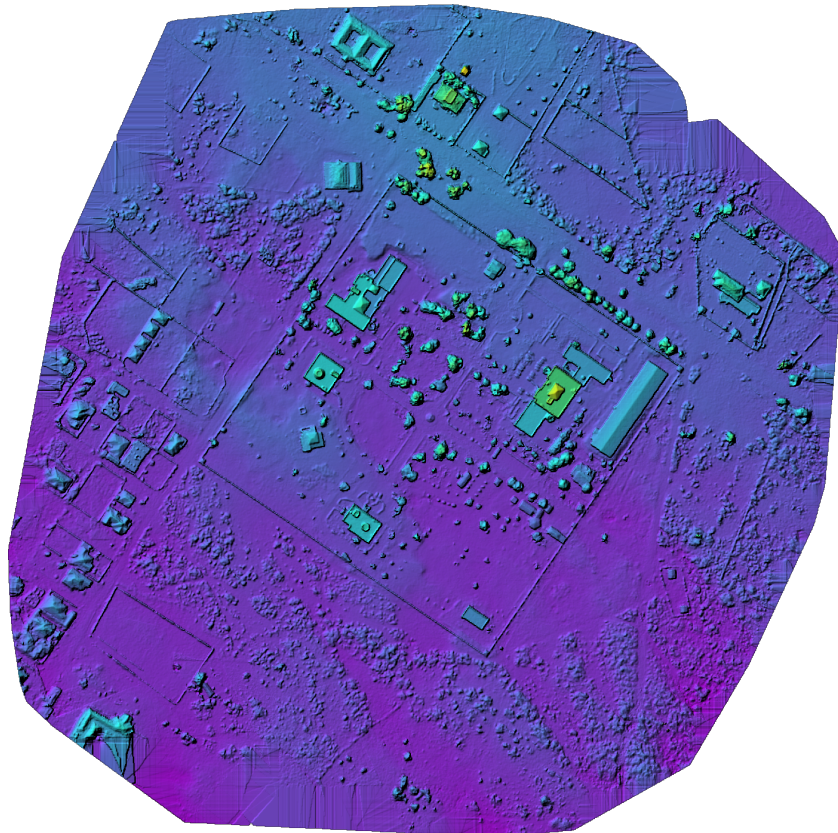
Reconstructed Images	135 over 135 shots (100.0%)
Reconstructed Points (Sparse)	145378 over 148295 points (98.0%)
Reconstructed Points (Dense)	30,951,675 points
Average Ground Sampling Distance (GSD)	4.8 cm
Detected Features	10,000 features
Reconstructed Features	5,007 features
Geographic Reference	GPS
GPS errors	0.87 meters



Previews



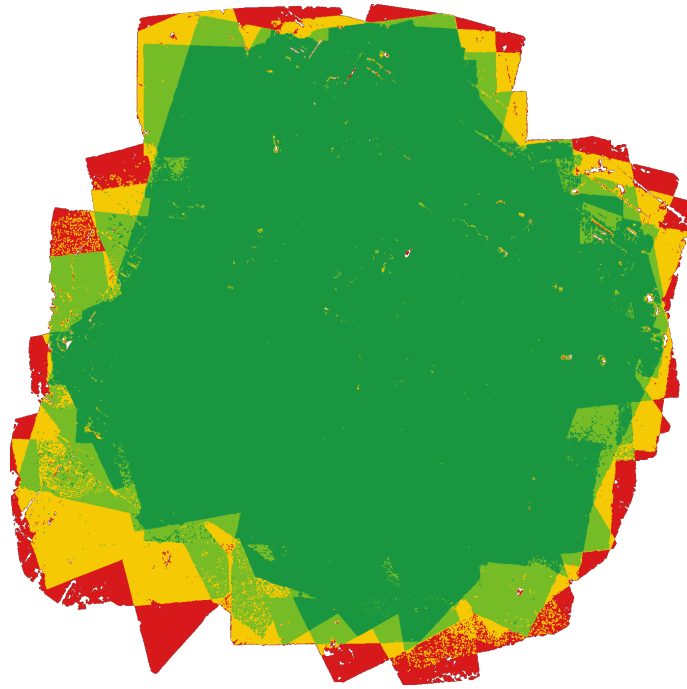
Orthophoto



Digital Surface Model



Survey Data



■ 2 ■ 3 ■ 4 ■ 5+

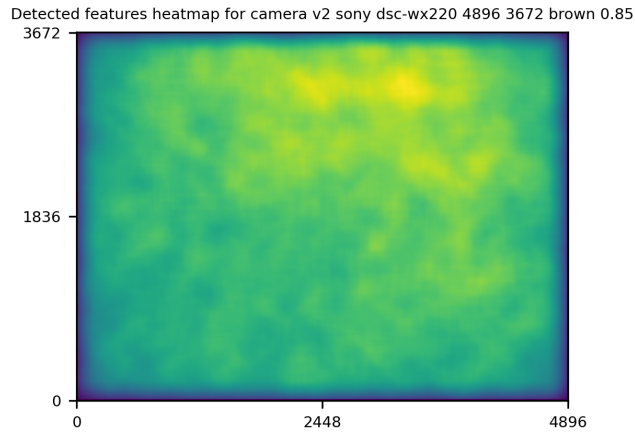
GPS/GCP/3D Errors Details

GPS	Mean	Standard Deviation	RMS Error
X Error (meters)	0.002	0.314	0.314
Y Error (meters)	0.005	0.385	0.385
Z Error (meters)	-0.009	0.816	0.816
Total			0.868

3D	Mean	Standard Deviation	RMS Error
X Error (meters)	0.096	0.144	0.173
Y Error (meters)	0.092	0.160	0.185
Z Error (meters)	0.292	0.588	0.657
Total			0.338

	Absolute	Relative
Horizontal Accuracy CE90 (meters)	0.825	0.331
Vertical Accuracy LE90 (meters)	1.316	0.583

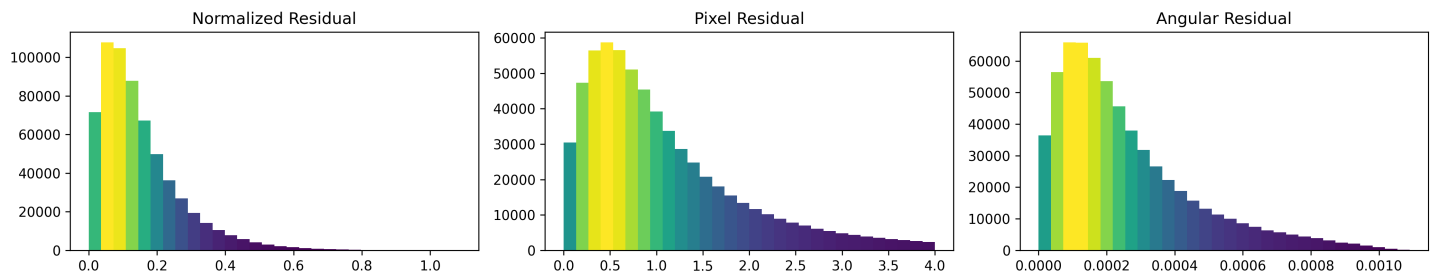
Features Details



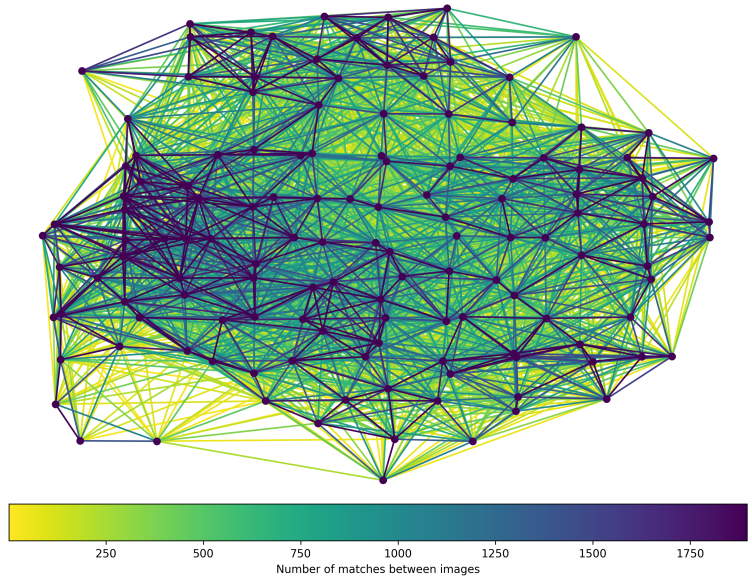
	Min.	Max.	Mean	Median
Detected	10000	10000	10000	10000
Reconstructed	2436	6835	4913	5007

Reconstruction Details

Average Reprojection Error (normalized / pixels / angular)	0.15 / 1.06 / 0.00025
Average Track Length	4.56 images
Average Track Length (> 2)	6.62 images



Tracks Details



Length	2	3	4	5	6	7	8	9	10
Count	64716	24275	13749	8840	6083	4890	3743	3119	2548

Camera Models Details

v2 sony dsc-wx220 4896 3672 brown 0.85

	k1	k2	k3	p1	p2	focal	aspect_ratio	cx	cy
Initial	0.0000	0.0000	0.0000	0.0000	0.0000	0.8500	1.0000	0.0000	0.0000
Optimized	-0.0128	0.0232	-0.0208	-0.0001	0.0021	0.7470	1.0000	0.0063	-0.0030

